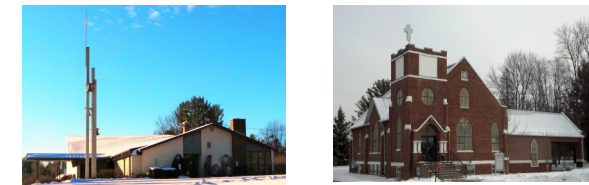


Faith Lutheran - North New Hope Lutheran
PO Box 6, Rosholt WI 54473 *715-677-4631
ELECTRONIC SERVICE REQUESTED



NONPROFIT ORGANIZATION
U.S. POSTAGE PAID
ROSHOLT WI
PERMIT NO.2

SEPTEMBER 2025 NEWSLETTER
Dated Material—Do Not Delay

FAITH LUTHERAN

Worship & Sunday School—8:45 am
Fellowship/Coffee Hour 9:45am

NORTH NEW HOPE

Sunday School—9:45 am
Worship: 10:45 am

Holy Communion is celebrated
the first and third Sunday of every month.
All are welcome.

Reverend Michael Peuse

OFFICE HOURS: Tuesday-Friday Noon-3pm
Church email: faithnhope@wi-net.com
Church Website: www.faithandnewhope.com

A new way to give!!

**Scan the QR code to be directed to
your church’s online giving portal.**

**Give one time, bi-weekly,
1st & 15th, or monthly.**

Your choice - Your convenience



Faith, Rosholt



North New Hope



Faith & North New Hope Newsletter

2025 Vol 47...No 09



Let’s talk about Lutefisk. But before we get there, I need to tell you about canned meat.

At the end of July, I returned to Iowa so that my mother could teach us how to make canned meat. Canning meat is what my parents did on the farm to preserve the meat from the old steer that no one would buy in the market. That old and tough meat packed into a jar, cooked, preserved, and shelved, is fundamentally NOT appealing to look at. However, this was how it was done to preserve meat for winter use or long-distance travel.

Similarly, lutefisk has a similar story. When the Scandinavians pulled cod from the ocean or other fish from lakes, lye made from ash was used to preserve the meat from boat to home. Unfortunately, as lye is caustic, the meat remains toxic until it’s fully rinsed and clean. There is good news for Wisconsinites who enjoy this traditional delicacy. There are 2 statutes written within Wisconsin law that allow lutefisk to be legally consumed. Code [101.58\(2\)\(j\)2.f](#) explicitly exempts lutefisk as being “toxic”, and [29.503\(1\)\(d\)](#) exempts it from being labeled as “seafood.”

Canned meat and lutefisk are unnecessary due to the invention of refrigeration in the last century. With ice and mechanical cooling equipment, and food resources more readily available across continents, these old-school methods of preservation are obsolete. So, why do we hold to them?

Food is a time machine. When I was snowed in, prevented from traveling home for Christmas, it was the meal of canned meat that brought me back home. Hundreds of miles away from home and family, it was the meal that

gathered me with my family around our separate tables. This is also true among you who enjoy lutefisk; your heart and mind are gathered by memory with loved ones throughout time; holiday tables and family meals.

When we gather for worship, the table is set with liturgies, prayers, hymns, and sacraments spanning many generations. We have modern language for the Lord’s Prayer we refuse to use because we hold fast to the King James version (canned meat/lutefisk) even when we have our own words (refrigeration). We gather around wine and bread, around God’s Word of promise given in word and sacrament, and we gather with each other. But we not only gather with those whom we go should to shoulder and hip to hip in the present, but we gather with the great cloud of witnesses sharing in God’s Word, grace, and love across time, across generations, across cultures.

The faith that holds us in Christ is not ours alone. While we share an ancient tradition spanning thousands of years, it is Christ who binds us together like canned meat and lutefisk. You are held together not merely by traditions, habits, or customs; you are held together with people by promises without expiration or exceptions given from the Great Promise Keeper.

Rev MP



If you are in need of pastoral care, such as a home or hospital visit, please contact the Church office at 715-677-4631 or email: faithnhope@wi-net.com to arrange a visit.



SEPTEMBER PARISH NURSE ARTICLE

September is high cholesterol awareness month. Here is some information about cholesterol. Blood cholesterol is a waxy, fat-like substance made by your liver. Blood cholesterol is essential for good health. Your body needs it to perform important jobs, such as making hormones and digesting fatty foods. Your body makes all the blood cholesterol it needs. Experts recommend that people eat as little dietary cholesterol as possible. Dietary cholesterol is found in animal foods, including meat, seafood, poultry, eggs, and dairy products.

What do blood cholesterol numbers mean?

Cholesterol is measured in milligrams per deciliter (mg/dL). When you go to a health care professional to get your cholesterol checked, this test will usually check the levels of cholesterol and triglycerides in your body. (A cholesterol check is also called a lipid panel or lipid profile.)

Low-density lipoprotein (LDL) or bad cholesterol

Having high levels of LDL cholesterol can lead to plaque buildup in your arteries and result in heart disease or stroke.

High-density lipoprotein (HDL) or good cholesterol

HDL is known as "good" cholesterol because high levels of it can lower your risk of heart disease and stroke.

Triglycerides.

A type of fat in your blood that your body uses for energy. The combination of high levels of triglycerides with either low HDL cholesterol or high LDL cholesterol levels can increase your risk for heart attack and stroke.

Total cholesterol.

The total amount of cholesterol in your blood based on your HDL, LDL, and triglycerides numbers.

What is high cholesterol?

If you are an adult or child, a total cholesterol above 200 mg/dL may be considered high. This condition is also called hyperlipidemia. Millions of people in the

United States have high cholesterol. It can cause health problems. Work with your health care team to prevent and manage high cholesterol by working toward optimal cholesterol levels.

Optimal Cholesterol Levels¹

Total cholesterol: About 150 mg/dL

LDL ("bad") cholesterol: About 100 mg/dL

HDL ("good") cholesterol: At least 40 mg/dL in men and 50 mg/dL in women

Triglycerides: Less than 150 mg/dL

Certain health conditions, such as type 2 diabetes and obesity, can raise your risk for high cholesterol. Lifestyle factors, such as eating a diet high in saturated and trans fats and not getting enough activity, can also raise your risk for high cholesterol. Some people who have a family history of high cholesterol can also be at risk for high cholesterol. All these factors are called "risk factors."

You can't control some of these risk factors, such as your age or your family history. But you can take steps to lower your risk for high cholesterol by changing things you can control.

Having high blood cholesterol can lead to a buildup called "plaque" on the walls of your arteries (a type of blood vessel). As plaque builds up over time, the insides of your arteries narrow. This can block flow to and from your heart and other organs.

When blood flow to the heart is blocked, it can cause chest pain (also called angina) or a heart attack.

As cholesterol (plaque) builds up in the arteries, the arteries begin to narrow, which lessens or blocks the flow of blood. High cholesterol also increases your risk for heart disease and stroke two leading causes of death in the United States.

Prevention

Strong evidence shows that eating patterns that include less dietary cholesterol are associated with reduced risk of cardiovascular disease. Your overall risk for high cholesterol depends on many factors. The only way to know whether you have high cholesterol is to get your cholesterol checked by your health care team. Talk with your health care team about how often you should have your cholesterol screened.

Have a blessed fall,

Your Parish Nurse

Source: <https://www.cdc.gov/cholesterol/about/>

SEPTEMBER



9/1-Lois Schadewald

9/1-James Krogwold

9/2-Kaylin Farrell

9/3-Morgan Kuklinski

9/3-Aurora Henke

9/4-Lori Teuchert

9/9-Amelia Matysik

9/13-Rebecca Ciesielski

9/13-Krystal Ferg

9/13-Kenneth Johnson

9/13-Kim Kolden

9/15-Daniel Johnson

9/18-Jan Kraetsch

9/19-Ruth Aanrud

9/20-William Dobbe

9/21-Save Grill

9/21-Troy Delaet

9/21-Oscar Richter

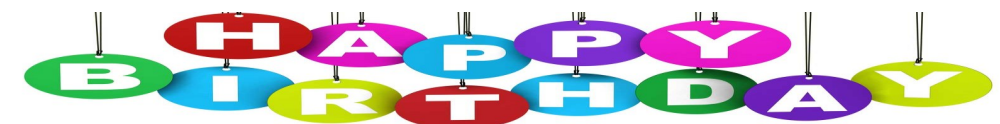
9/22-Debbie Krogwold

9/22-Kelly Aarud

9/23-Logan Inderdahl

9/25-Chet Yenter

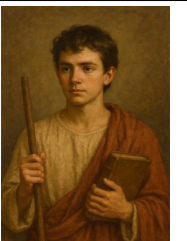
9/26-Dana Inderdahl




- Labor Day, *September 1, 2025*
- National Grandparents Day, *September 7, 2025*
- Patriot Day, *September 11, 2025*
- Hispanic Heritage Month, *September 15-October 15, 2025*
- First Day of Autumn, *September 22, 2025*

Bible Quiz

Timothy was a young man who became a trusted companion and co-worker of the apostle Paul. Which of the following statements is not accurate?



- Timothy's mother and grandmother taught him the Scriptures.
- Paul considered Timothy his spiritual son.
- Timothy was born in Rome and raised as a Roman citizen.
- Paul wrote two New Testament letters addressed to Timothy.

| Sunday | Monday | Tuesday | Wednesday | Thursday | Friday | Saturday |
|---|--|--|---------------------------------|---|--------|----------|
| | 1  | 2 Faithful Knotter's Meet at 8:30am | 3 Bible Study 3:30pm online | 4 ADRC Senior Meal site @ Nelson-Kaminski Legion Hall, Rosholt. Age 60 or older. Suggested donation \$5 | 5 | 6 |
| 7 Faith Worship 8:45am Coffee & Conversations during coffee hour NNH Worship 10:45am | 8 Pastor's Sabbath Office Closed | 9 Faithful Knotters meet at 8:30 am | 10 BibleStudy3:30pm online | 11 ADRC Senior Meal site @ Nelson-Kaminski Legion Hall, Rosholt. Age 60 or older. Suggested donation \$5 | 12 | 13 |
| 14 Faith Worship 8:45am w/coffee hour NNH Coffee & Conversations 10:15am Worship 10:45am | 15 Pastor's Sabbath Office Closed | 16 Faithful Knotters meet at 8:30am | 17 Bible Study 3:30pm online | 18 | 19 | 20 |
| 21 Faith-Worship 8:45am w/coffee hour NNH Sunday School 9:45am Worship 10:45am | 22 Pastor's Sabbath Office Closed  | 23 Faithful Knotters meet at 8:30am | 24 Bible Study 3:30pm online | 25 ADRC Senior Meal site @ Nelson-Kaminski Legion Hall, Rosholt. Age 60 or older. Suggested donation \$5 | 26 | 27 |
| 28Outdoor Worship Faith-Worship 8:45am w/coffee hour NNH Sunday School 9:45am Worship 10:45am with Noisy offering | 29 Pastor's Sabbath Office Closed | 30 Faithful Knotters meet at 8:30am | | | | |



Faith

Faith Coffee & Conversations
1st Sunday of the month,
following worship, during coffee hour.

North New Hope

North New Hope Coffee & Conversations
2nd Sunday the month,
before worship, 10:15am.



Coffee Fellowship

Sign up sheet on bulletin board by
north entrance.

Make coffee, serve desserts/treats, and clean up.

Sign up with family and/or friends.

SEPTEMBER FAITH COFFEE HOUR SIGN UP

9/7/2025 Karen Johnson
9/14/2025 OPEN
9/21/2025 OPEN
9/28/2025 Lori-Phyllis-Patricia-Judy



Faith Church Council is seeking a candidate for
the paid Treasurer position. If interested,
please contact the church office for more
information.

Call 715-677-4631 or email:
faithnhope@wi-net.com

N New Hope
SUNDAY SCHOOL



Preschool thru 6th grade are welcome to
attend Sunday School at 9:45am before
worship services. Noisy Offerings last
Sunday of every month.

Thank you to everyone who contributed to
the produce stand at Tractor Sunday.
Thank you to: Raddatz family for helping
with set up, and Jim & Sandy for the use of
their Ranger for display. Proceeds from
produce stand go to ELCA Good Gifts. This
summer we tied two fleece blankets for the
on Tractor Sunday auction. The money from
blankets also for Good Gifts project. NNH
Sunday School is currently gathering school
supplies for Lutheran World Relief. List of
items needed on table in back of church.
Sunday School has backpacks and the
students fill them on 9/21-first day Sunday
School resumes. School Kits will be
displayed in church for a blessing. Deadline
to drop off school supplies is Sunday, 9/14.



JOINT YOUTH GROUP(7th-12th grades)

Youth Group meets every other Sunday night
at Faith Church 7:00 pm.

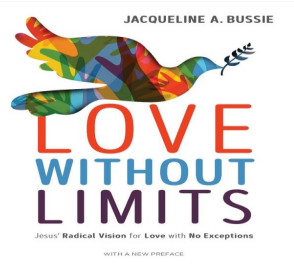
Updates are shared via text and on our
Youth Group Facebook page.

Contact Naomi, naomi.peuse@gmail.com
or call (715) 677-4994



FAITH SUNDAY SCHOOL

Sunday School held during
worship. Josh or Chelsea will lead
them to the Fireside room for lessons, crafts,
treats, and fun!! Please call or text Joshua
Panter with questions. 715-340-8058



**Women Register for
Biennial Convention
Saturday, November 8**

Dear women of **N New Hope & Faith congregations**,

I am eager to invite you to register for the East Central Synod of Wisconsin's Women of the ELCA Biennial Convention Saturday, 11/8/2025. **St. Mark's Lutheran Church, 140 Green Bay Rd, Neenah, WI**
Deadline to register: 10/6/2025 Cost \$35.00

I am the Tomorrow River Conference Representative and will be the Treasurer for our synod's Women of the ELCA. I've been working hard with the board to organize an inspirational and energy-boosting event including breakfast, fellowship, a business meeting, worship service, lunch, and featured speaker Jacqueline Bussie, author of the book "Love Without Limits: Jesus' Radical Vision of Love with No Exceptions."

The biennial convention is an opportunity for our local congregations to meet with other ladies in the synod and to remember what inspires and connects us through our Lutheran traditions. Author Jacqueline Bussie is an award-winning author and in-demand public speaker who spoke at the 2023 Triennial Gathering in Phoenix and the 2024 Youth Gathering in New Orleans. I'm excited to see her in Wisconsin after both Betsy Suehring and my teenage son Michael Bassett spoke so highly of her! Betsy Graham & Betsy Suehring first introduced this event to me in 2023. It is a great way to get to know each other and to appreciate our local connections and our broader connections to the conference and synod women as well.

Register online at: rebrand.ly/biennial2025
or let me know in person/email:

chelsea.basset@gmail.com

Paper registration forms are available
and scholarships too. Let me know if interested.

Sincerely, Chelsea Bassett



FAITH WELCA NEWS

Project Fresh Start.

Lori Teuchert delivered all the school supplies to United Way of Portage County on 8/13. Over 50 items were donated!
Thank you everyone!

PB&J Drive.

Collecting peanut butter and jelly for the Salvation Army until August 31st. Final totals will be in October newsletter.

Flowers for the Altar.

All the artificial flowers were recently gone thru, tossing out some of the worn out flowers. Please consider donating artificial flowers, bouquets or singles, for a variety to place on the altar. Need several bouquets for each season and/or holidays.

Fireside Room.

Still looking to replace the last folding round table with a wooden table. If you have a table to donate, contact Karen Johnson. Making the Fireside Room more comfortable and inviting for members & guests.

Faith WELCA Booklets 2025/2026

There are still a number of booklets not picked up on the table by the bulletin board. Please take your booklet to save WELCA the cost of mailing it to you.

NEW WORSHIP HELPERS SIGN-UP

SHEETS AT FAITH

Sign up to help by the week
instead of quarterly.

1 Leader (Council member)
and 3-4 helpers.

Sign up sheets are similar to
Lector, Coffee Hosts, or
Flowers sign up sheets.

Sign-up Sheets on the bulletin board
by the north entrance.

North New Hope Lutheran Church

Council Meeting August 17th, 2025

Attendance: Krys Ferg, Patti Gburek, Melissa Richter, Jim Hotvedt, Michelle Raddatz, Pastor Mike and Tammie Ellingson

Call to Order: Meeting called to order by Tammie
Pastor's report and devotions: Pastor reported that Pastor Jen Pockat from the ELCA attended the Tractor Sunday event. She put together a 2-minute video about the event that was very nice. This can be viewed on the NNH Facebook page. He felt the whole event went very well. Pastor is preparing for Catechism on Wed. nights. He shared with the council the topics he will cover. In September Faith will be preparing for the Portage County Fair. He also discussed the: "God's Work Our Hands" Initiative that typically occurs in September but due to our Tractor Sunday event this is something we have pushed off due to time constraints of both churches. This is something he will bring up next year to see if there is any interest in this initiative.

Pastor will be out of town on Saturday Sept. 6th.

On September 21st, there will be the Blessing of Back Packs at NNH and Quilt Blessing at Faith.

We will have Outdoor worship on 8-31st and 9-28th.

Pastor will attend a fall conference October 13th - 15th.

Approval of June 30th Meeting minutes: Jim motioned, Patti & motion passed to approve minutes

Financial Secretary Report: Krys presented financial reports for July & August (month to date) Patti moved, Jim 2nd, & motion passed to approve the Financial Reports.

Old Business: Tractor Sunday recap-The council discussed all the positives from our event. Worship service was well received. The Band was exceptional. Ambrosia catered and served a great meal. The hot dog table was a hit again this year. There were plenty of desserts. We discussed the Basket Auction and will have further discussion about this at the Joint Council Meeting. We discussed the contingency planning for rain. More discussion will be held at the Joint Council meeting. Krys will investigate the cost of renting the very large tents from her contact for next year. These tents would be placed and could use in case of rain or extreme heat.

New Business: Next Council Meeting 9/8/2025 5:30pm at Faith Next Joint Council meeting on 9/8/2025 at 6:00 pm at Faith

Lead Worship service assignments:

August 24th: Michelle August 31st: Outdoor Service

September 7th: Patti September 14th: Tammie

Sunday September 21st: Jim

Patti motioned to adjourn, Michelle seconded

Meeting adjourned



Thank you to N New Hope and Faith congregations for the prayers over the last few months during my treatment and surgery.

I appreciated the food and the cards I received which really brightened my days.

Thank you to Pastor Mike for traveling to see me during my two hospital stays. It was very much appreciated and I could feel the prayers throughout all of this. Prayers are powerful. I appreciate you all and welcome your prayers as the doctors continue to watch over me.

God Bless,

Lenore Peterson

NNH BABY SHOWER

September 13 at 1pm

Baby shower for Stormy Poeschel
& baby at N New Hope.

All are welcome



DRIVE YOUR TRACTOR TO CHURCH SUNDAY RECAP

This summary is sent with heartfelt gratitude for all the volunteers that helped with this event.

This year we hosted about 240 people and registered 35 Tractors. This is far more than the last two years and with the questionable weather forecast we were so pleased by the turnout.

We had such great participation from both churches. We could not have pulled this off without all of your help.

Thank you for the great ground’s cleanup, the inside cleaning crew that met earlier in the week to prepare for this event, the Sunday 7am set up crew, and the team that takes care of the breakdown and clean up! The Saturday prep was well staffed from both churches. Thank you so much for the work with the desserts and preregistering the baskets. Special thanks to the bakers and basket makers for your donations each year!

The prep work completed on Saturday made our Sunday run smoothly!

Our big day was just fantastic! We had a wonderful worship service. Pastor Mike did such a great job, many participants from the community commented that this service is one they do not miss as the messaging is just so special. The North New Hope Haybalers played excellent Blue Grass music which we look forward to each year.

The dinner catered by Ambrosia was again excellent, the “kids table” was again a hit with the young and the young at heart. Special thanks to Dave and Lenore Peterson for donating the cheese curds, they are a nice touch.

The desserts were plentiful and well displayed and organized in the church basement. We had a few desserts left and there was plenty of pie again this year.

The Basket Auction featured 26 baskets, we decided to move inside due to the threatening thunderstorms and our auctioneer was able to adapt and put on a very entertaining auction. The Produce stand and Lemonade stand sponsored by the New Hope Sunday School were also a hit again this year.

We had great volunteers from the Amherst FFA and the Nelsonville Zippee Zee’s 4-H club, we truly appreciate all the help these students provided.

Thank you again to all the volunteers who continue to make this opportunity for outreach into the community a success for the past 18 years.

Until Next year 8/9/2026!

Respectfully Submitted
Tammie Ellingson :
North New Hope Council President



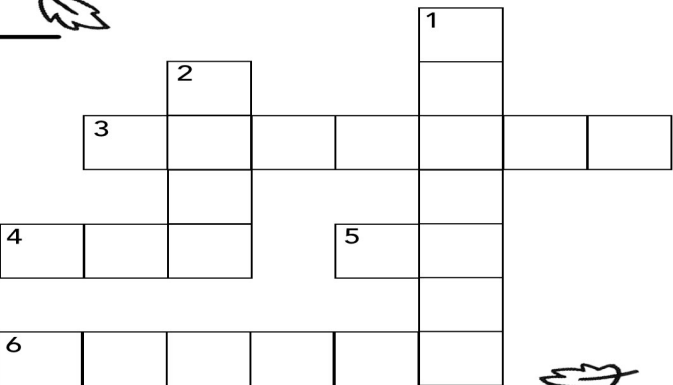
Puzzle!

**Use the words provided to complete the puzzle.
Then write the numbered words in the correct blanks
below to complete Psalm 67:6, NIV.**

WORDS:
GOD, BLESSES, HARVEST,
YIELDS, US, LAND

- ACROSS**
- 3. Rhymes with farthest.
 - 4. Rhymes with nod.
 - 5. Rhymes with thus.
 - 6. Rhymes with fields.

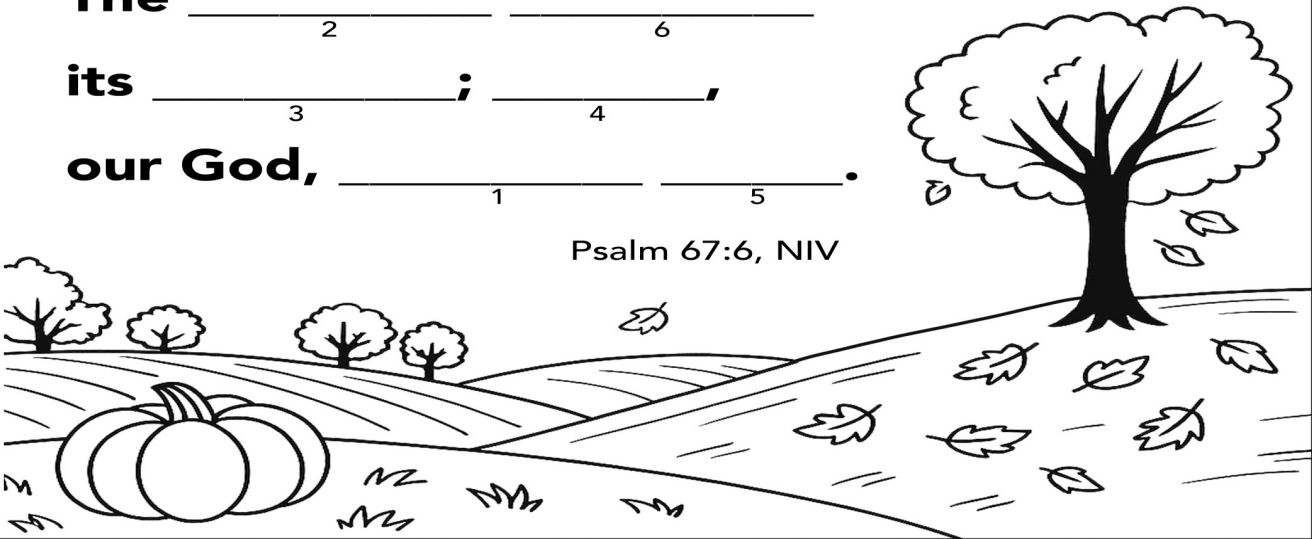
- DOWN**
- 1. Rhymes with messes.
 - 2. Rhymes with hand.



The _____ **its** _____ **our God,** _____

2 6 3 4 1 5

Psalm 67:6, NIV



Answer: The land yields its harvest; God, our God, blesses us. Psalm 67:6, NIV